

Who We Are

Dave Mitchell and Associates Ltd. is a BC company established in 2000 that offers consulting services for all aspects of public safety operations. Our client list includes fire departments and governments at the provincial, territorial, regional and municipal levels in British Columbia, Alberta, Ontario, the Yukon and Northwest Territories. Our firm is independent and is not affiliated with any technology, apparatus or other product vendors.

Our services include:

- ◆ master fire plans
- ◆ fleet analysis
- ◆ fire hall location studies
- ◆ fire services reviews
- ◆ GIS analysis
- ◆ governance and bylaw reviews
- ◆ executive recruitment
- ◆ quality assurance programs
- ◆ technology procurement, implementation and support
 - Computer Aided Dispatch
 - Record Management Systems
 - Mobile Communications including mobile workstations
 - Fire Station Alerting
- ◆ planning, assessment and implementation of 9-1-1 systems
- ◆ public safety voice and data radio systems reviews
- ◆ communication centre design

- ◆ dispatcher recruitment and training
- ◆ occupational health and safety reviews
- ◆ organizational reviews and strategic planning
- ◆ executive coaching
- ◆ training including training centre reviews
- ◆ inspections and audits
- ◆ technical writing
- ◆ disaster recovery/business continuity plans



DAVE MITCHELL & ASSOCIATES LTD.

P.O. Box 64618
RPO Como Lake
Coquitlam, BC
V3J 7V7

Phone: 604-812-8951
Fax: 604-552-8951
E-mail: dwmitchell@telus.net

DAVE MITCHELL & ASSOCIATES LTD.

GIS Mapping Services

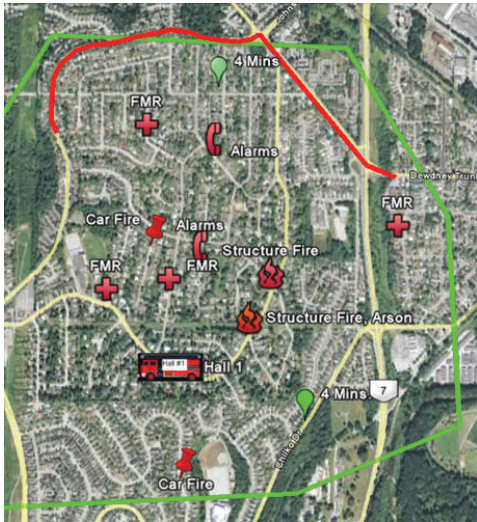


Tel: 604 812 8951

GIS Mapping Services

Mapping

The GIS mapping services provided by Dave Mitchell & Associates Ltd. is based on response and location data you provide. We can spatially display any combination of fire hall locations, hazards, responses by incident type, arrival times on scene, as well as by time of day.



Sample map

Advantages

- ◆ The mapping software used is constantly updated to include the newest streets, as well as orthographic information such as physical features.
- ◆ The fire department does not have any capital cost for the purchase of dedicated GIS mapping software or an electronic road network to display their call information.
- ◆ The fire department does not have to train staff to manage the data analysis.
- ◆ The GIS analysis can be done on any basis that your department requires including:
 - ◆ monthly
 - ◆ quarterly
 - ◆ annually
 - ◆ as required

Reports

The mapped reports can include:

- ◆ Hot spot maps displaying:
 - ◆ arson activity
 - ◆ hazardous material responses
 - ◆ mutual aid responses
 - ◆ motor vehicle incidents
 - ◆ structure fires

- ◆ Response time maps showing:
 - ◆ 4 minute arrival times
 - ◆ 8 minute arrival times
 - ◆ time to assemble a full structure fire response
- ◆ Special circumstances such as:
 - ◆ out-bound mutual aid
 - ◆ in-bound mutual aid
- ◆ Polygon overlays for:
 - ◆ response districts
 - ◆ inspection districts
 - ◆ areas without hydrants
 - ◆ forest interface

What We Need From You

- ◆ Response and location data in an electronic format suitable for importing such as .xls (MS Excel®) or .mdb (MS Access®).

Cost

- ◆ Cost is based on your requirements and can be provided on a one time basis, or on a continuing basis.
- ◆ There is no long-term commitment, simply use as much or as little of the service as you require.